



**SUBARU**

**SUBARU**

**FORESTER**

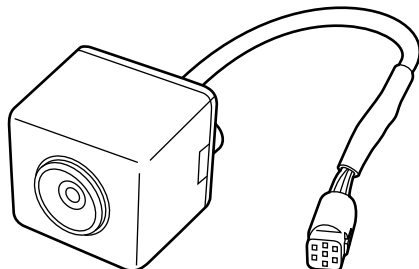
**INSTALLATION  
INSTRUCTIONS**

**PART NUMBER: H001SSC700 (CC-1131F-B)**

**DESCRIPTION: REAR CAMERA KIT**

**A**

**KIT CONTENTS:  
CONTENU DU KIT :**



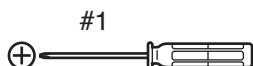
1 X

**B**

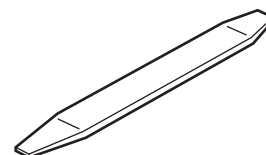


2 X

**TOOLS REQUIRED:  
OUTILS NÉCESSAIRES :**



#1



#2



Nylon trim removal tool  
Outil pour retrait de garniture en nylon

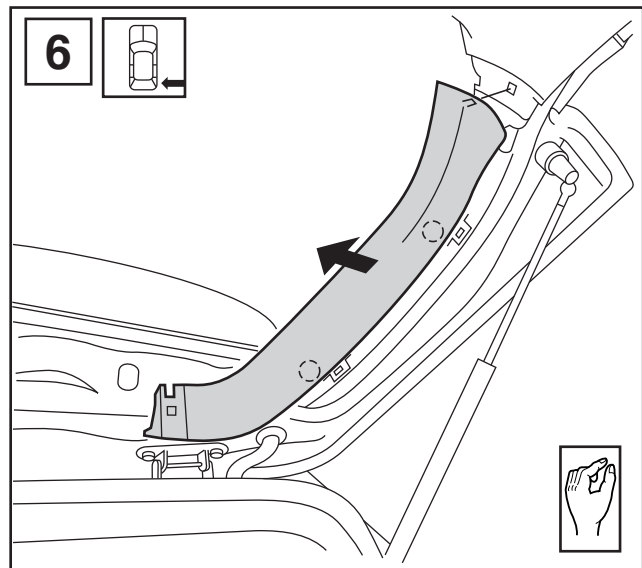
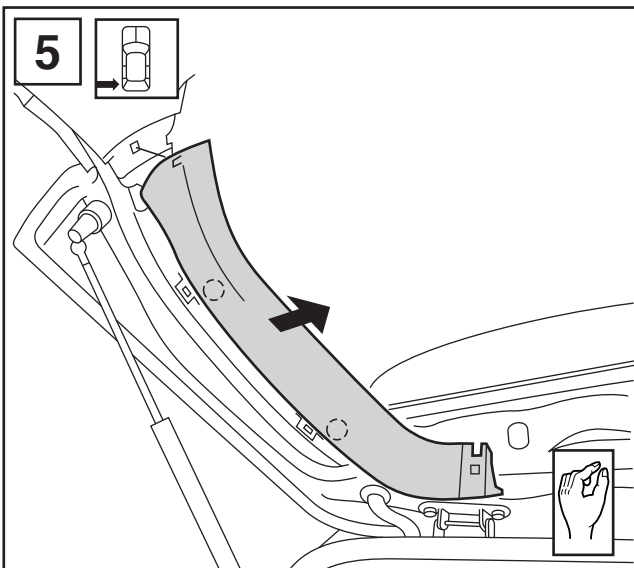
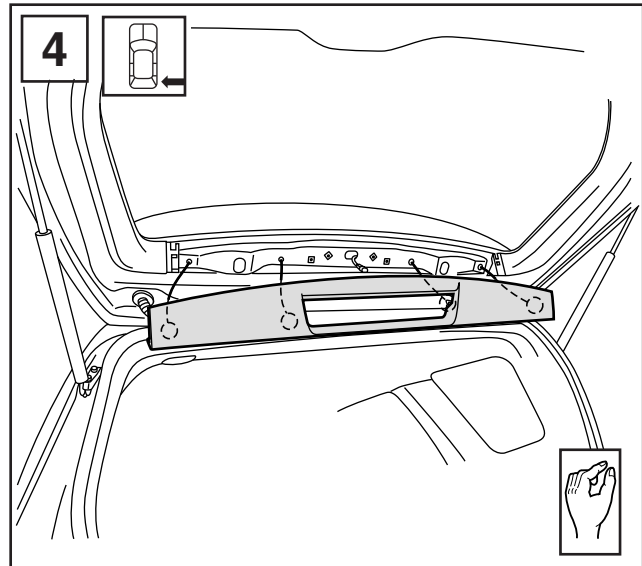
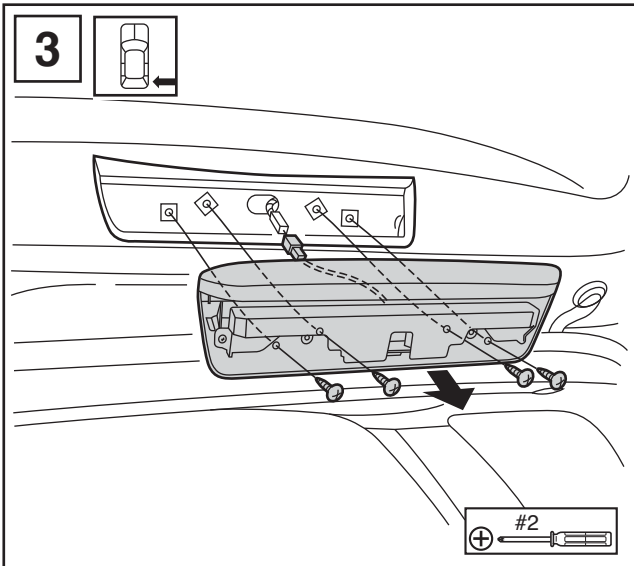
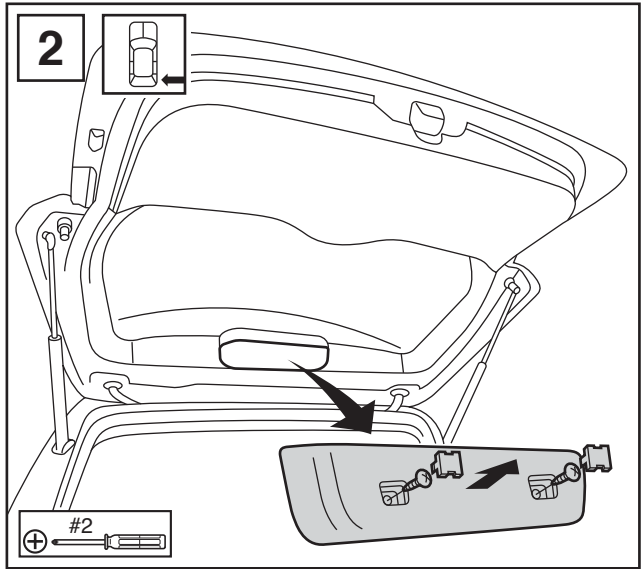
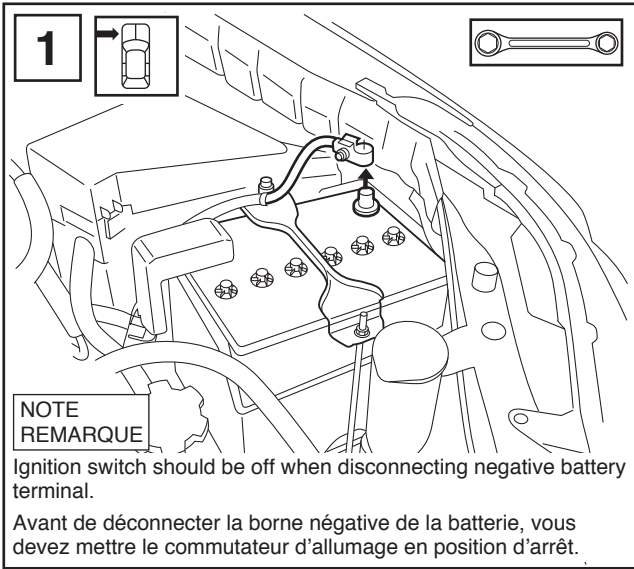
**MEANING of Characters:  
SIGNIFICATION des caractères :**

- : Remove  
Retirer
- : Install  
Installer
- : Disconnect  
Déconnecter
- : Connect  
Connecter

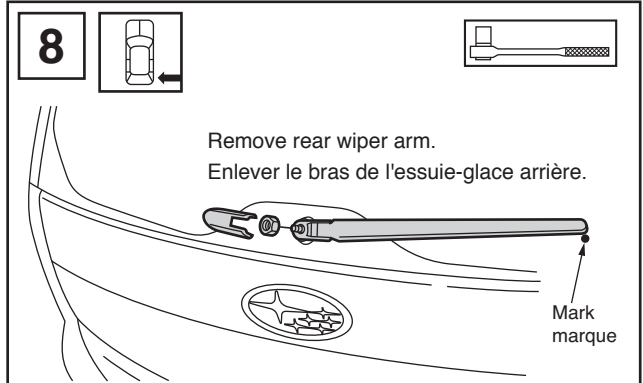
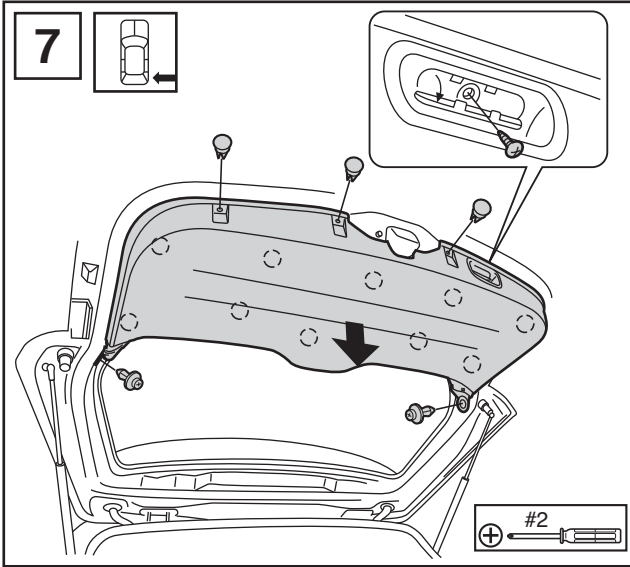
- : Location of Clip or Screw  
Emplacement de l'attache ou de la vis

- T** : Tightening Torque  
Couple de serrage
- : Loosen  
Desserrer
- : Discard  
Jeter
- : Reuse  
Réutiliser

# FORESTER



# FORESTER

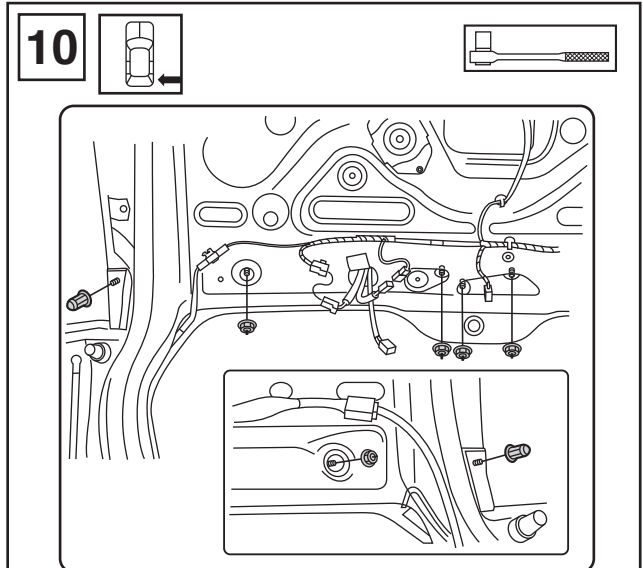
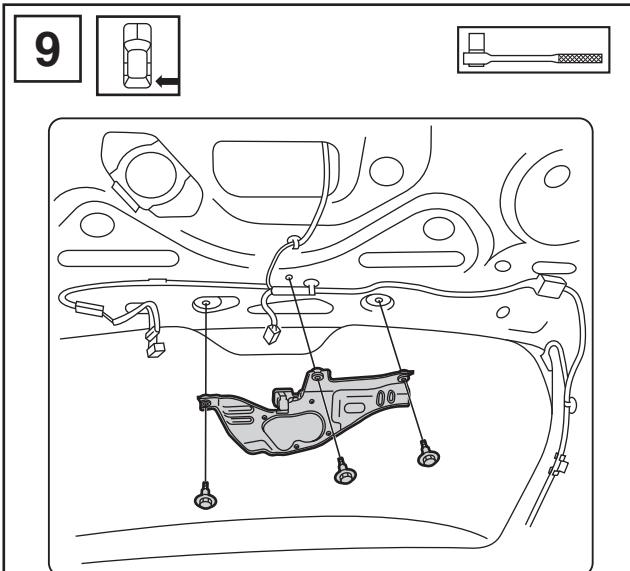


**CAUTION**

- ① Note the position of rear wiper arm before removal, wiper arm must re-installed into original position. During reinstallation, be sure that the wiper arm rests on mark on rear glass.
- ② Tightening torque of nut 6ft-lb (0.8295kg-m). Do not over torque.

**ATTENTION**

- ① Noter la position du bras de l'essuie-glace arrière avant de l'enlever. Lors de la réinstallation, s'assurer que le bras de l'essuie-glace arrière repose sur la marque de la lunette arrière.
- ② Couple de serrage du boulon 6ft-lb (0.8295kg-m). Ne pas serrer excessivement.



**CAUTION**

- ① Tightening torque of bolts 4.4ft-lb (0.608kg-m). Do not over torque.

**ATTENTION**

- ① Couple de serrage du boulon 4.4ft-lb (0.608kg-m). Ne pas serrer excessivement.

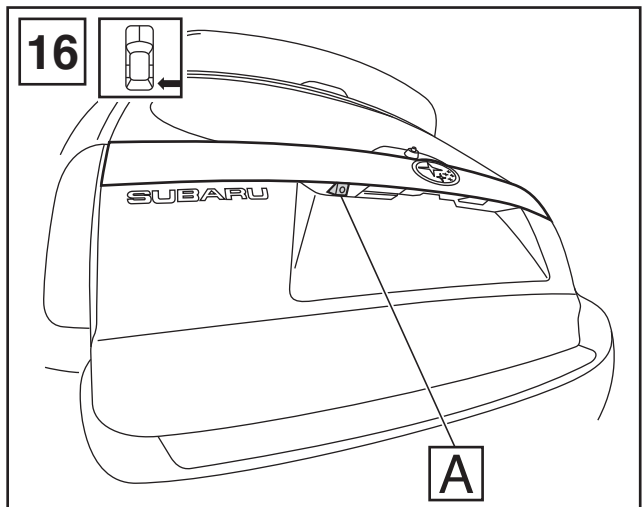
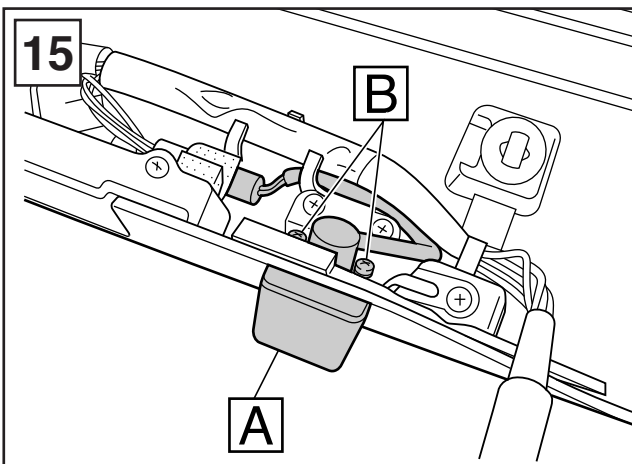
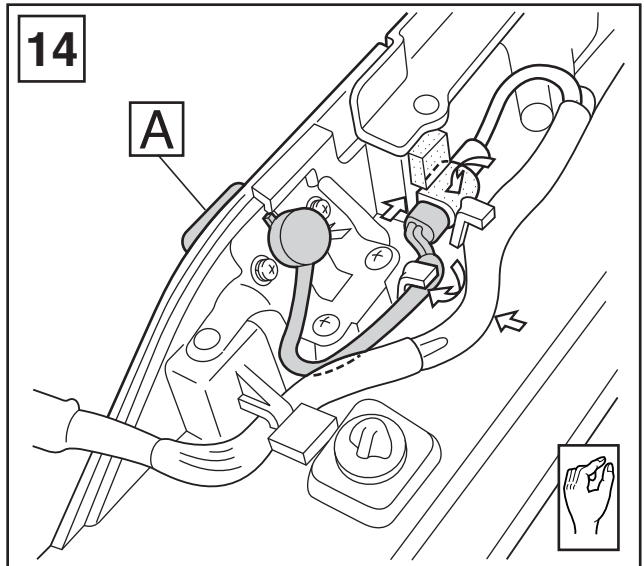
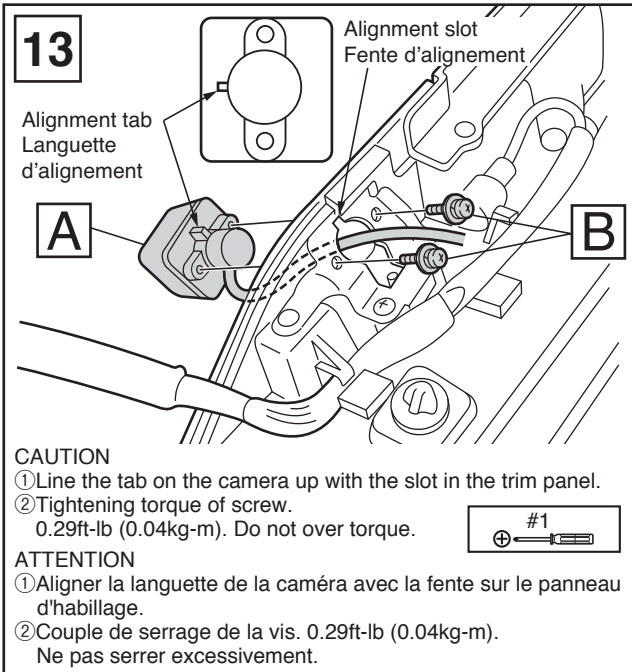
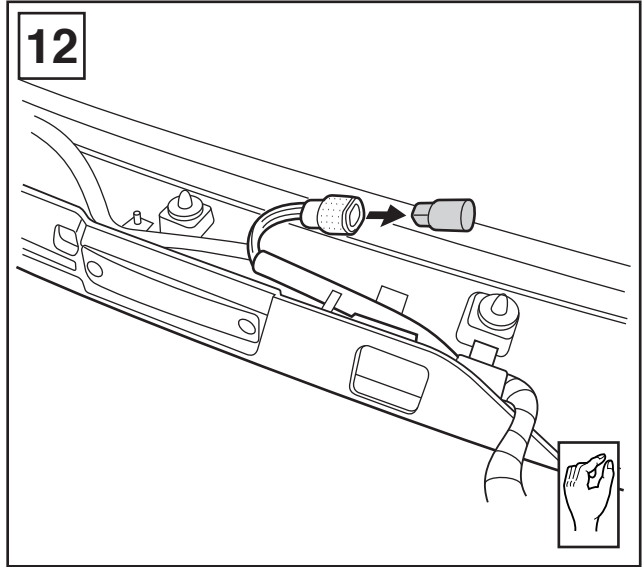
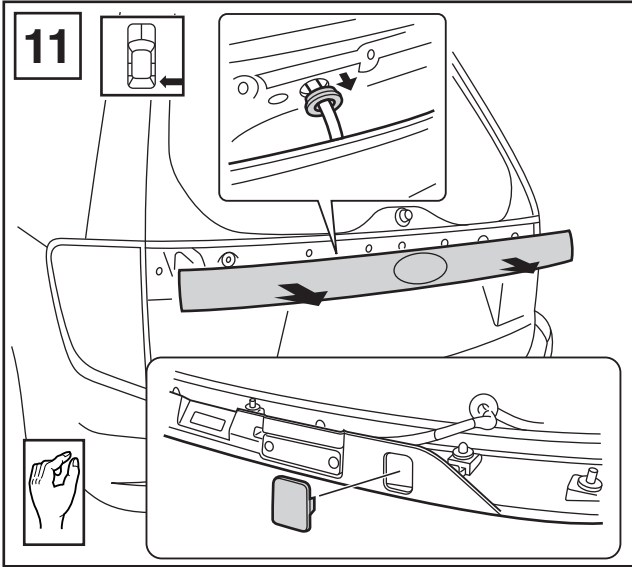
**CAUTION**

- ① Tightening torque of bolts 3.3ft-lb (0.456kg-m). Do not over torque.

**ATTENTION**

- ① Couple de serrage du boulon 3.3ft-lb (0.456kg-m). Ne pas serrer excessivement.

# FORESTER



Reassembly: **11** → **1**